

Bleeding in Lymphatic Malformation of Orbit

Tuba Kalelioglu, MD

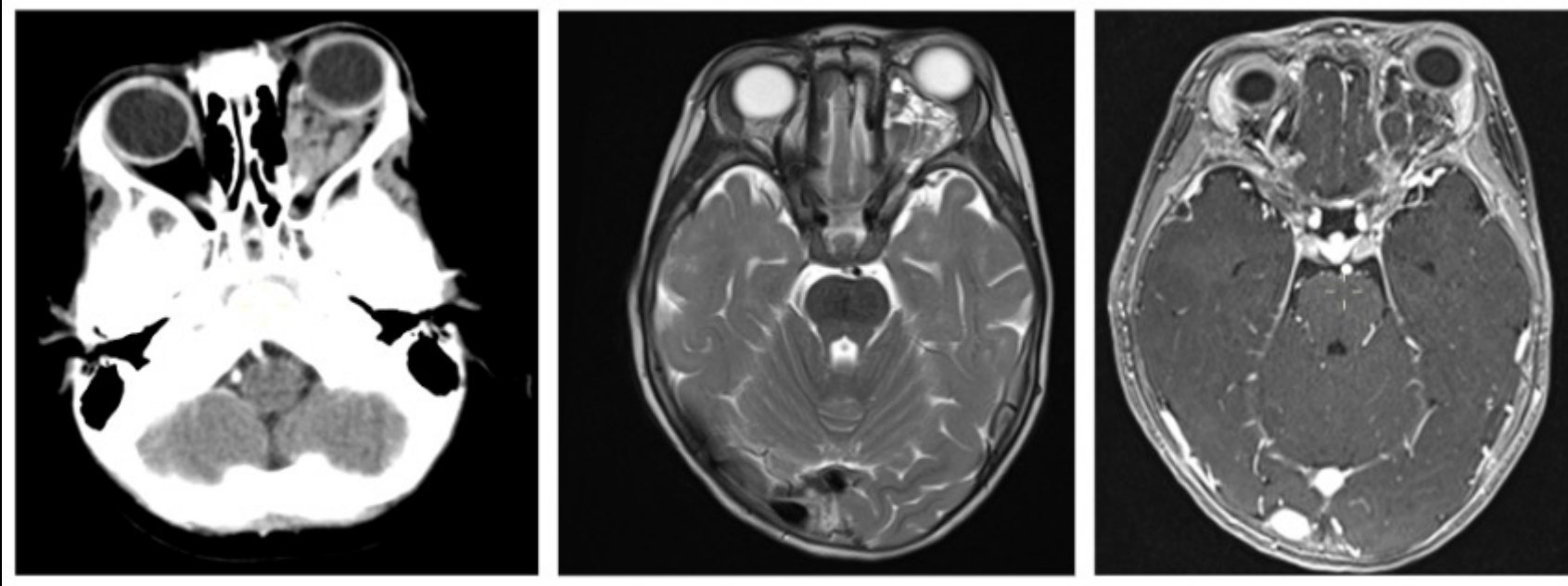


UNIVERSITY
of
VIRGINIA

Clinical Presentation

- A 15 year old female presented to ED with acute left eye swelling.

Imaging Discussion



CT head showed heterogeneous soft tissue within the left intraconal space extending from the globe posteriorly to the orbital apex and superior orbital fissure and causing proptosis.

MRI brain showed fluid layering in the mass on T2WI without contrast enhancement. Findings are consistent with multicystic left orbital lymphatic malformation.

Management and Outcome

Imaging features were consistent with lymphatic malformation with presumed recent hemorrhage. Follow up MR imaging showed spontaneous improvement of the mass with resolution of fluid-fluid levels.

Case was discussed at the Multidisciplinary Vascular Anomalies Conference and Sirolimus or sclerotherapy due to the high likelihood of this lesion having a rebleed was recommended.

Take Home Points

- Complications of orbital lymphatic malformations include hemorrhage, infection and optic neuropathy secondary to mass effect on optic nerve. Radiology plays a key role to identify complications and guides management.

References

- Smoker WR, Gentry LR, Yee NK, Reede DL, Nerad JA. Vascular lesions of the orbit: more than meets the eye. *Radiographics*. 2008 Jan-Feb;28(1):185-204; quiz 325. doi: 10.1148/rg.281075040. PMID: 18203938