

Cerebral Migration of Intraocular Silicone Oil

Tuba Kalelioglu, MD

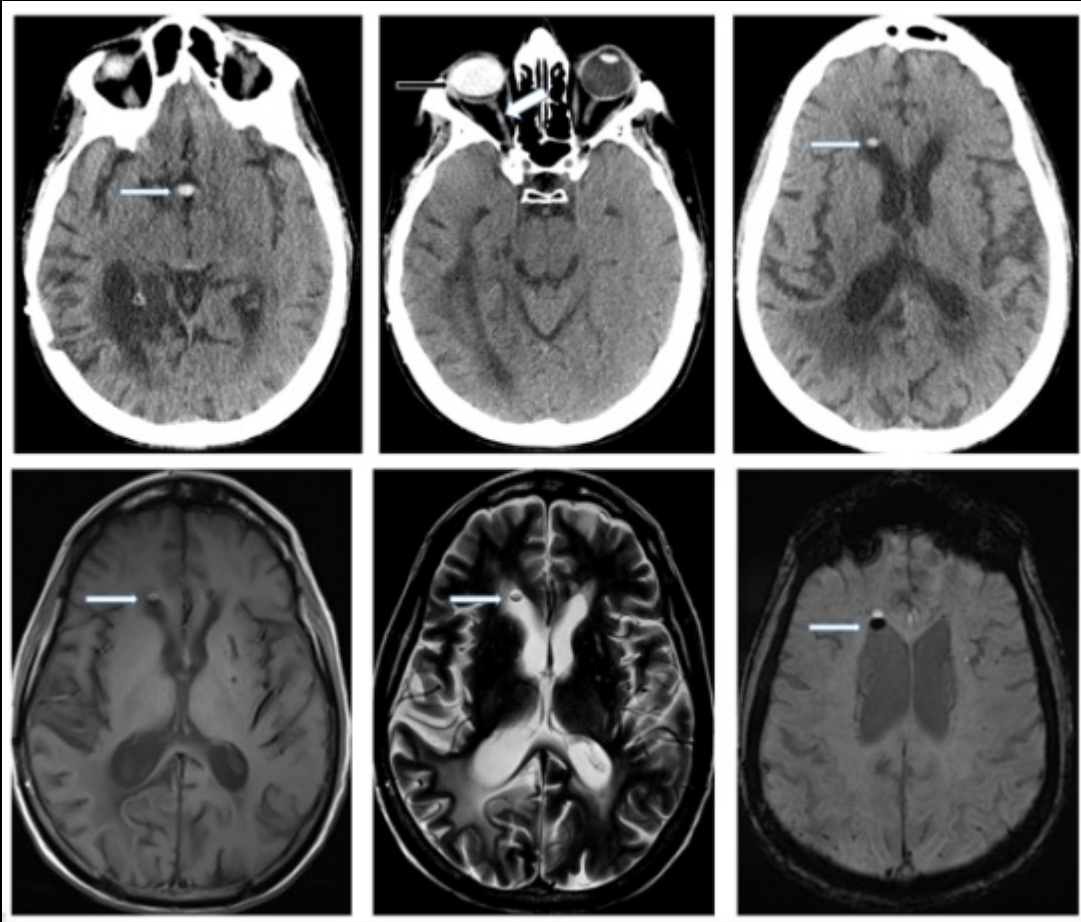


UNIVERSITY
of VIRGINIA

Clinical Presentation

- 58 yo male presented ED with right-sided weakness.

Imaging Discussion



- CT head showed status post silicone oil injection into the right vitreous body as hyperdense material. There is hyperdensity along the right optic nerve, optic chiasm and non-dependent portion of right lateral ventricle.
- T1WI, T2WI and SWI showed hyperintense material along the right optic nerve, optic chiasm and frontal horn of the right lateral ventricle associated with chemical shift artifact in frequency encoding direction.

Take Home Points

- Cerebral migration of silicon oil is almost always an incidental finding however, vision problems have been described in literature as case reports. Increased attenuation on CT head images helps to differentiate silicone oil migration from ruptured dermoid cyst.

References

- Abdalkader M, Takumi K, Chapman MN, Barest GD, Peeler C, Sakai O. Subretinal and Retrolaminar Migration of Intraocular Silicone Oil Detected on CT. *AJNR Am J Neuroradiol*. 2019 Sep;40(9):1557-1561. doi: 10.3174/ajnr.A6176. PMID: 31467241; PMCID: PMC7048457.