

Paget's Disease Causing Optic Neuropathy in a 75 Year Old Female.

Tuba Kalelioglu, MD

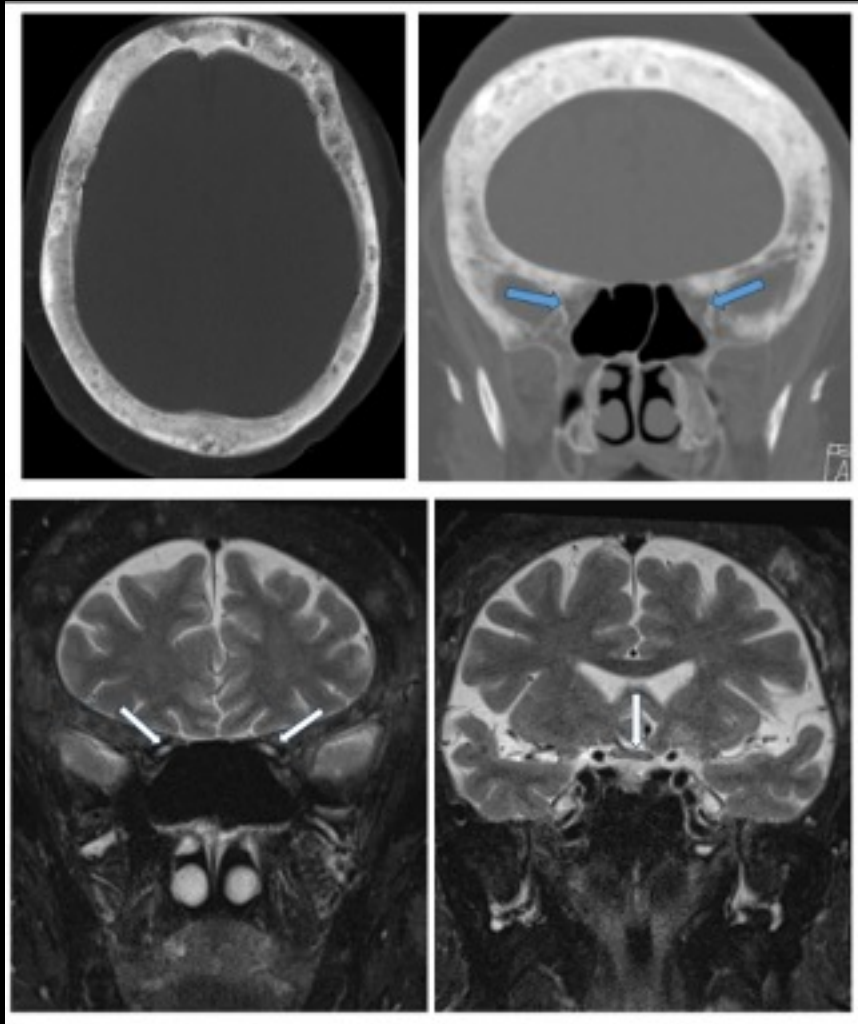


UNIVERSITY
of
VIRGINIA

Clinical Presentation

- 75 year old female with bilateral slowly progressing vision loss.

Imaging Discussion



- CT head imaging showed diffuse widening of diploe with mixed lytic and sclerotic lesions. There is narrowing of the bilateral optic apices (blue arrows).
- MRI orbit imaging showed increased T2 signal in bilateral optic nerves as well as optic chiasm (white arrows). Findings were consistent with optic neuropathy secondary to bone compression.

Take Home Points

- Paget's disease is a metabolic bone disorder that typically affects older individuals. It begins with a lytic phase and progresses to a late phase characterized by the presence of both lytic and sclerotic lesions, giving the bone a "cotton wool appearance". The widening of bone can lead to cranial neuropathies, such as sensorineural hearing loss, and less commonly, optic neuropathy, by compressing nerves within the corresponding canals.

References

- Theodorou DJ, Theodorou SJ, Kakitsubata Y. Imaging of Paget disease of bone and its musculoskeletal complications: review. *AJR Am J Roentgenol*. 2011 Jun;196(6 Suppl):S64-75. doi: 10.2214/AJR.10.7222. PMID: 21606236.