

Osteoporosis Circumscripta Cranii

Tuba Kalelioglu, MD

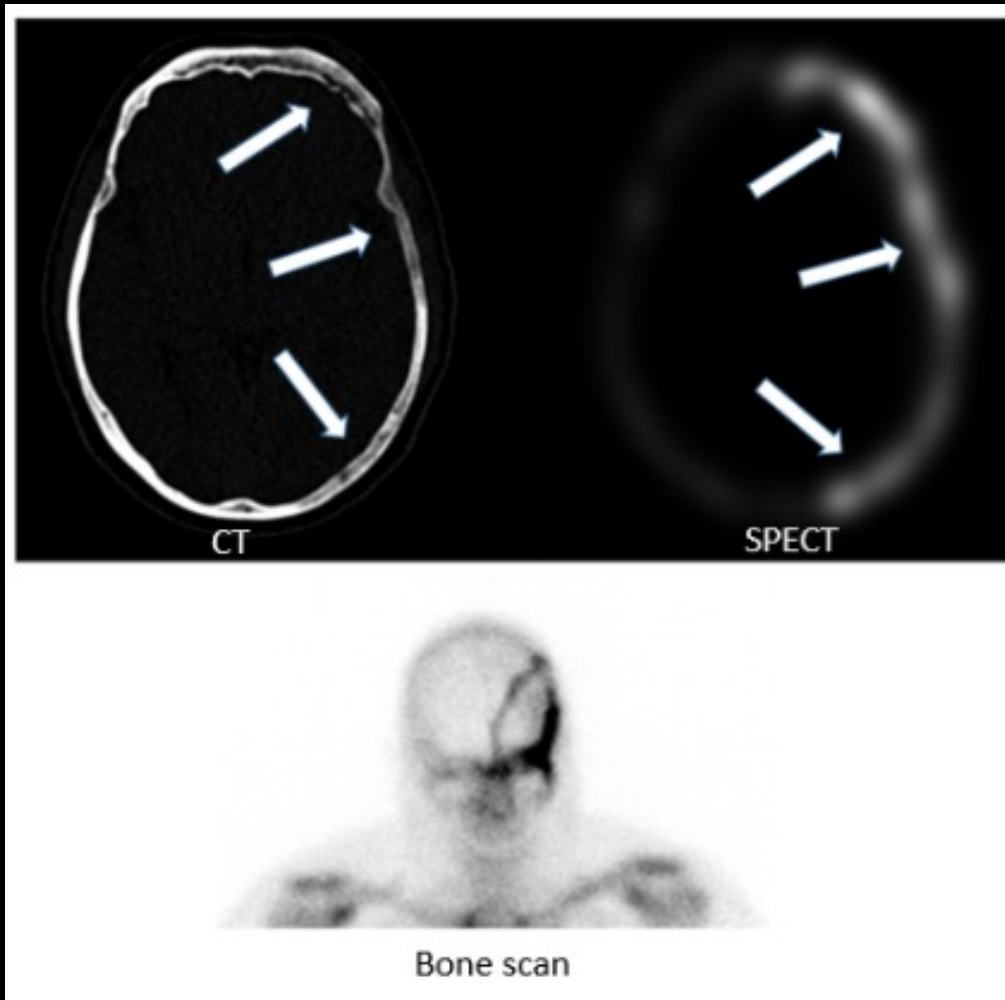


UNIVERSITY
of VIRGINIA

Clinical Presentation

- 63 y.o. male with a past medical history of hypertension was found to have alkaline phosphatase elevation.

Imaging Discussion



- Tc-99m MDP bone scan showed increased radiotracer uptake involving left frontal, temporal, sphenoid and parietal bones which correspond with the lytic area on CT.

Management and Outcome

- Bisphosphonate therapy was started with 1 dose of Reclast in subsequent monitoring of alkaline phosphatase for response.

Take Home Points

- Three stages are described in Paget's disease including early destructive lytic stage, intermediate mixed (lytic/sclerotic) stage and late sclerotic stage. Recognition of the imaging findings of each stage is important for radiologists to help the clinician to make an early diagnosis and guide the management.

References

- Simcic KJ, Bruder JM. Visual vignette: osteoporosis circumscripta. *Endocr Pract*. 2003 May-Jun;9(3):256. doi: 10.4158/EP.9.3.256. PMID: 12917071.