

# Mucopolysaccharidosis type

II

Tuba Kalelioglu, MD

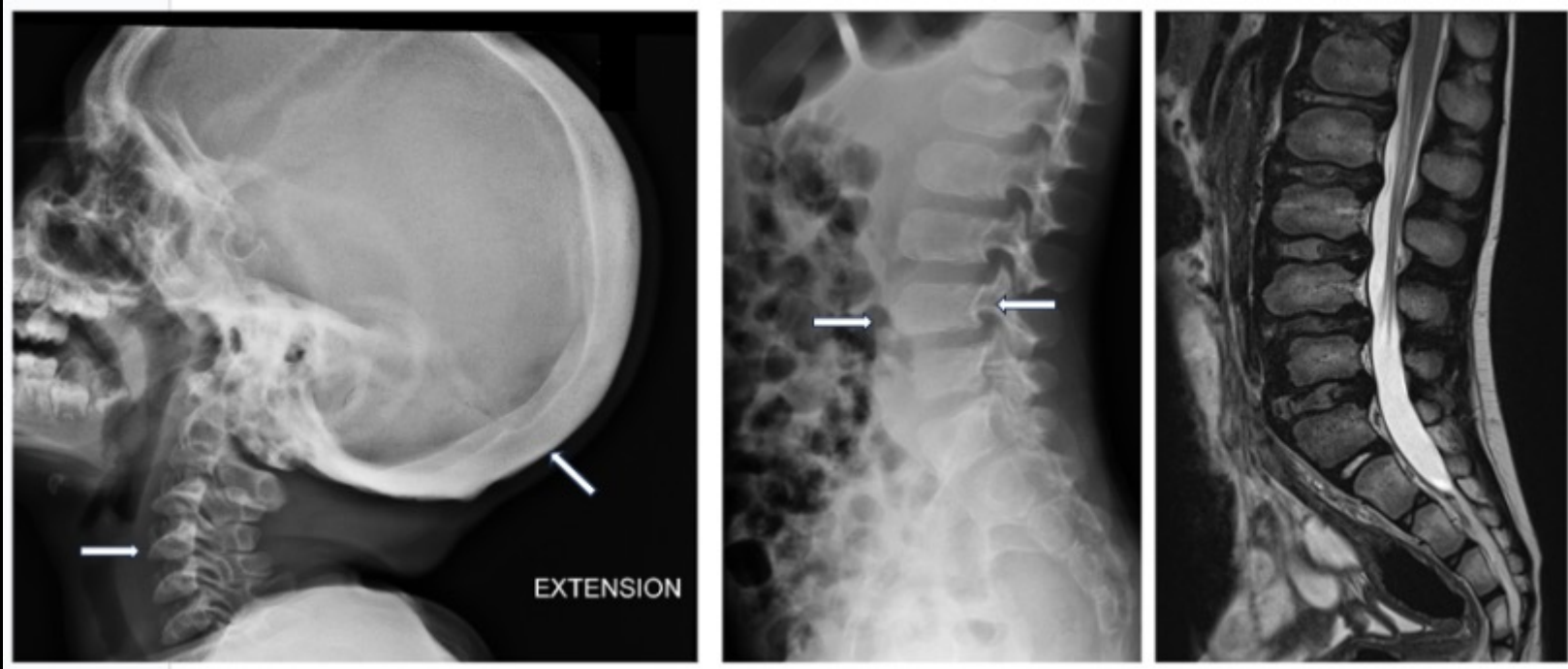


UNIVERSITY  
*of* VIRGINIA

# Clinical Presentation

- 12 year old boy with Mucopolysaccharidosis type II.

# Imaging Discussion



- Lateral cervical showed thickening of the diploë. Anterior beaking of the vertebral body also known as bullet-shaped vertebra is seen on both cervical and lateral radiographs.
- Lumbar spine MRI showed edge-shaped vertebrae, platyspondyly, anterior beaking and posterior scalloping (bullet-shaped vertebrae), wide disc spaces and posterior bulging of intervertebral disks.

# Management and Outcome

- MPS is a group of inherited lysosomal storage disorders which can show a variety of musculoskeletal findings. We aimed to present a case of MPS type II with typical imaging features of spine and skull involvement.

# Take Home Points

- MPS is a group of inherited lysosomal storage disorders which can show a variety of musculoskeletal findings. We aimed to present a case of MPS type II with typical imaging features of spine and skull involvement.

# References

- Reichert R, Campos LG, Vairo F, de Souza CF, Pérez JA, Duarte JÁ, Leiria FA, Anés M, Vedolin LM. Neuroimaging Findings in Patients with Mucopolysaccharidosis: What You Really Need to Know. *Radiographics*. 2016 Sep-Oct;36(5):1448-62. doi: 10.1148/rg.2016150168. PMID: 27618324.