

Multiple System Atrophy Parkinsonian Type (MSA-P) with Characteristic Imaging Findings

Tuba Kalelioglu, MD



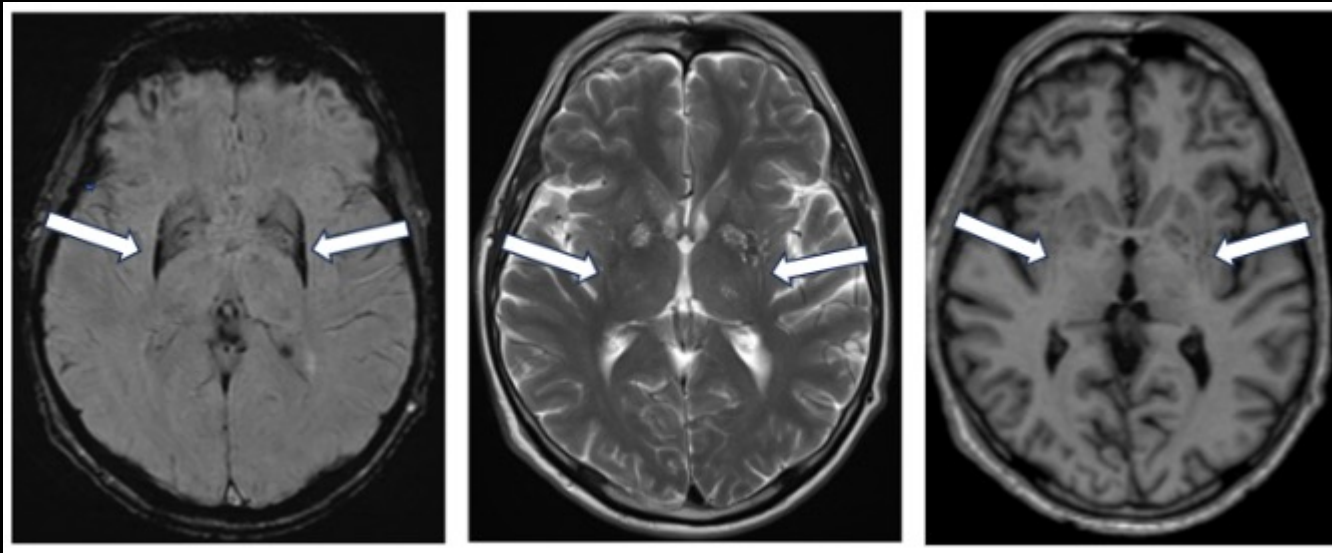
UNIVERSITY
of
VIRGINIA

Clinical Presentation

- A 67 year old male presented with increased drooling, bradykinesia, change in speech, walking difficulties and postural instability.

Imaging Discussion

- MRI brain at 1.5 T showed bilateral putaminal atrophy associated with hypointensity on SWI which mainly involves lateral and posterior putamina. There is thin linear hyperintensity on T2WI along the lateral aspect of putamina which is called 'Putaminal rim sign'.



Management and Outcome

- Patient was diagnosed with Multiple System Atrophy - Parkinsonian type (MSA-P) and started levodopa and sertraline.

Take Home Points

- The differentiation between Parkinson's disease and atypical parkinsonian syndromes can be challenging in clinical practice. MRI brain imaging could help to differentiate Multiple System Atrophy-P from Parkinson's disease and other atypical parkinsonian syndromes.